



## QUICKSHIP PROGRAM

“Seoma”



SPECIES *European oak.*

JANKA *1360 Lbf.*

GRADE *Character (ABCD).*

CONSTRUCTION *Engineered Multi-ply.*

JOINT *Tongue and Groove.*

PLANK THICKNESS *5/8" overall.*

WEAR LAYER *Nominal 4mm.*

PATTERN *Straight Plank. Treads, risers, nosing available. \**

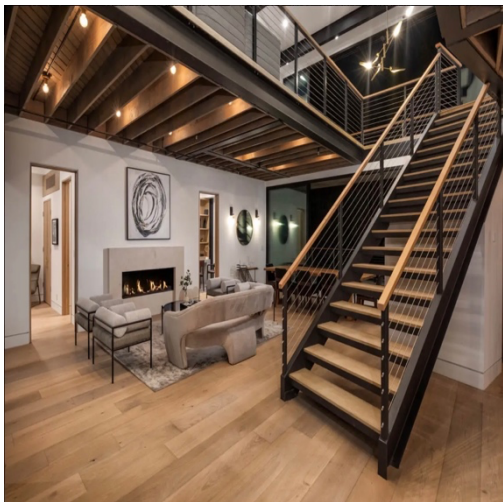
TEXTURE *Light wire-brush.*

BEVEL TYPE *Micro bevel.*

PLANK WIDTH *10 1/4".*

PLANK LENGTH *Up to 87". Most 87".*

FINISH *Oil light satin sheen.*



*Organic materials such as wood express variations in color and texture that are part of their inherent beauty. These are not considered defects. Please keep in mind that based on your computer screen settings images may not render the exact color of the actual material. Flooring installation images are also reflective of the light in the actual location and are out of Beauxbois' control. A sample is recommended for a better appreciation of the color of this floor.*

*\*Custom treads, risers and nosing pieces available upon request. Full customization available for quantities over 5000 Sq Ft.*